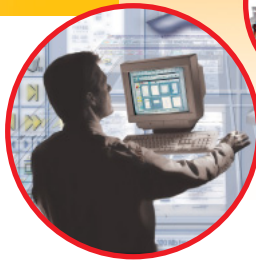


**Kodak**

# Scanner 3500 and 3520

Continuous  
scanning. Start  
right here.



The KODAK DIGITAL SCIENCE Scanner 3000 Series is the ideal choice for mid-range, bitonal scanning productivity. Both scanner models deliver exceptional reliability, ease of use and affordability. The Scanner 3520 has a 250-sheet feeder and 350-sheet output tray, with speeds up to 85 pages per minute (ppm). It performs advanced image processing (auto deskew and auto crop) and the DP model features pre-scan document imprinting.

In addition, the Scanner 3520 features Perfect Page Scanning – now with iThresholding for dramatically reduced presorting, rescans and post-image processing. Perfect Page Scanning automatically deskews images, crops borders and smoothes edges on text. The new iThresholding feature is essential for workloads with mixed batches of documents. Brightness and contrast are automatically adjusted for each individual document. For maximum productivity, this labor-saving combination of technologies from Kodak delivers consistently high image quality at full processing speed.

#### **A TRANSPORT SYSTEM THAT HANDLES THE PAPER FOR YOU.**

The best-in-class paper feeding and handling of the Scanner 3000 Series all but eliminates labor-intensive document presorting, jams and rescans. The feeder accepts and feeds batches of mixed paper sizes and weights. It's easy to add more pages to a stack during scanning for continuous feeding. The

transport system gently and quickly moves documents through a short path, delivering non-stop scanning that's practically trouble-free.

#### **EASY ON YOUR OPERATORS. EASY ON YOUR BOTTOM LINE.**

The press of a button or click of a mouse is all you need to run these scanners. On-board image processing maintains image quality automatically. Industry-standard interfaces and drivers bundled with the 3000-Series Scanners enable them to support a wide range of applications, including scan-to-Web scanning. User-replaceable parts, such as lamps and feeder rollers, help keep the cost of ownership low. Plus the 3000-Series Scanners are backed by worldwide service and support from Kodak (where available).

#### **SCAN WITH CONFIDENCE USING THE KODAK SCANNER 3500 AND 3520.**

For more information about how the 3000-Series Scanners can help you improve your document imaging operation, contact your Authorized Reseller of KODAK Imaging Products. Need to find a reseller?

Visit [www.kodak.com/go/docimaging](http://www.kodak.com/go/docimaging)



- Paper Transport
- Flexible Feeding
- Perfect Page, now with iThresholding (Scanner 3520 only)



**iN**novation you can count on™

## FEATURES/BENEFITS

**Reliable, forgiving paper transport** virtually eliminates time-wasting document presorting, misfeed interruptions and rescans to enhance throughput.

**Simple operation** enables casual operators to be productive with minimal training.

**Perfect Page Scanning, now with iThresholding**, reduces pre-sorting, rescans and post-image processing. Auto deskew and auto crop combine with iThresholding to maximize your throughput (3520 only).

**Flexible feeding** handles batches of mixed sizes and weights from onionskin to card stock to save labor; allows reloading while feeding for continuous scanning.

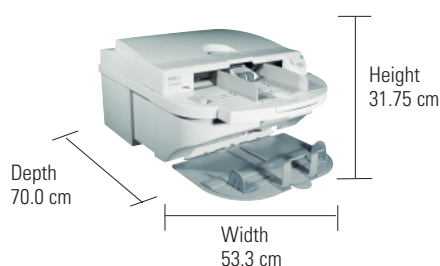
**Automatic multi-feed detection** detects document overlaps to prevent scanning errors.

**User-replaceable service items** reduce service calls and scanner downtime by allowing operators to swap rollers, lamps and imaging guides without special tools or training.

**Optional drop out colour lamps (red, green, blue)** enable scanning for forms processing.

**Document imprinting** adds indexing and tracking information to the front side of documents prior to scanning (3520DP only).

**Reference Archiving certified (3520 only)**



Weight 29 kg

## SPECIFICATIONS

THROUGHPUT: (LETTER SIZE OR A4)				
Feeding orientation		Resolution		
		200 dpi	300 dpi	
Landscape uniform documents (Scanner 3520)		85 ppm	57 ppm	
Landscape mixed documents		75 ppm	50 ppm	
Portrait uniform documents (Scanner 3520)		67 ppm	45 ppm	
Portrait mixed documents		60 ppm	40 ppm	
FEEDER AND OUTPUT TRAY CAPACITIES				
Model	150-sheet feeder	250-sheet feeder	250-sheet output tray	350-sheet output tray
Scanner 3500	Standard	Optional	Standard	Optional
Scanner 3520	Not available	Standard	Not available	Standard
Recommended daily volume		From 1,000 to 20,000 pages (up to 40,000 images duplex)		
Source document input		Minimum: 6.4 x 6.4 cm (for imprinting: 6.4 x 14 cm) Maximum: 66 x 30.5 cm Thickness: 0.038 to 0.760 mm Weights: 50 to 200 g/m <sup>2</sup>		
Multi-feed detection		Scanner 3520: length and thickness Scanner 3500: length		
Imaging		600 dpi CCD developed and manufactured by Kodak		
Output		200 or 300 dpi		
Output format		CCITT Group 3-1D, 3-2D, 4 or uncompressed		
Document imprinting (3520DP only)		Front side using standard inkjet printer cartridges Up to 40 alpha-numeric and special characters per page Static and dynamic fields (sequential increments to 9 places) 0° and 90° orientation Two font sizes		
Interface support		SCSI		
Bundled drivers		ISIS and TWAIN		
Environmental factors		Operating voltage range: 100 to 127 V AC, or 200 to 240 V AC, 50/60 Hz, single phase Operating temperature: 15 to 35°C Operating humidity: 15 to 76% (dry bulb) Altitude: up to 2,400 m		
Acoustical characteristics		Sound power (max.): 70 dBA Lwa Sound pressure (max.): 64 dBA Lpa		
Heat dissipation		850 Btu/hour (max.)		
Approvals		UL 1950, C-UL 950, EN 60950, CE Mark, FCC Part 15 Class A, Canada ICES-003 Class A, EN 55022 Class B, CISPR22 Class B, VCCI Class 1, C-Tick Mark, Taiwan CNS 13438 Class A		

## CONTACT INFORMATION

United Kingdom, Scandinavia, Phone: +44 1 442 845213, Fax: +44 1 442 844273

Austria, Germany & Switzerland, Phone: +49 711 406 3411, Fax: +49 711 406 5166

Eastern Europe, Middle East & Africa, Phone: +36 1 3879117 (Ext. 131), Fax: +36 1 3879113

France, Spain, Portugal, Phone: +33 1 4001 4082, Fax: +33 1 4001 3981

Italy, Phone: +39 02 660 28 338, Fax: +39 02 660 28 358

The Netherlands, Belgium, Luxembourg, Phone: +31 347 363 612, Fax: +31 347 363 606

[www.kodak.com/go/docimaging](http://www.kodak.com/go/docimaging)